

March 2025

St. Charles Parish Library News and Events



BOOKPAGE

LOUISIANA PHILHARMONIC ORCHESTRA
PRESENTS:



BACH TO SCHOOL CONCERT

TUESDAY, MARCH 25

EAST REGIONAL LIBRARY
@3:30PM

WEST REGIONAL LIBRARY
@6:00PM



Always open at www.myscpl.org

WHAT'S INSIDE

- What's on the Cover 2
- Planetarium Shows 3
- Event Listings 4-11
 - Adult & All Ages, 4-5
 - Events Calendar, 6-7
 - Teen Events, 8-9
 - Children & Family Events 10-11
- Locations & Hours 12

UPCOMING CLOSURES

All locations will be closed on these dates:

- March 3 & 4 - Mardi Gras
- April 18 - Good Friday



BOOKMOBILE

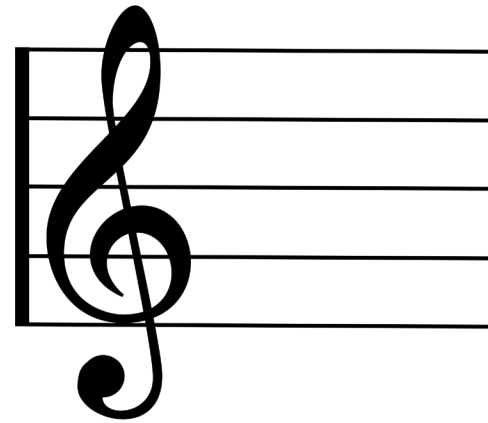
Call 985-764-9643 ext. 205 or 206 for more information.

For more information, visit our website at www.myscpl.org.

Stay connected with us by following our social media accounts @stcharleslib or download our app using the QR code below.



Music in March



Music lovers young and old are invited to a special performance of a duet of strings by the Louisiana Philharmonic Orchestra (LPO) in March.

They will have two performances open to all ages on Tuesday, March 25, one at the East Regional Library at 3:30pm and the other one at the West Regional Library at 6:00pm.

The LPO will also be featured at a special musical storytime on Saturday, March 22 at 10:30am at the East Regional Library.

This interactive story and musical adventure will feature an LPO musician playing on their instrument, talking about their instrument and their background, as well as a story with musical accompaniment.

The LPO is dedicated to maintaining live orchestral music and a full-scale symphonic orchestra as an integral part of the cultural and educational life of the New Orleans area, the entire state of Louisiana, and the Gulf South region.

Beanstack Reading Challenge



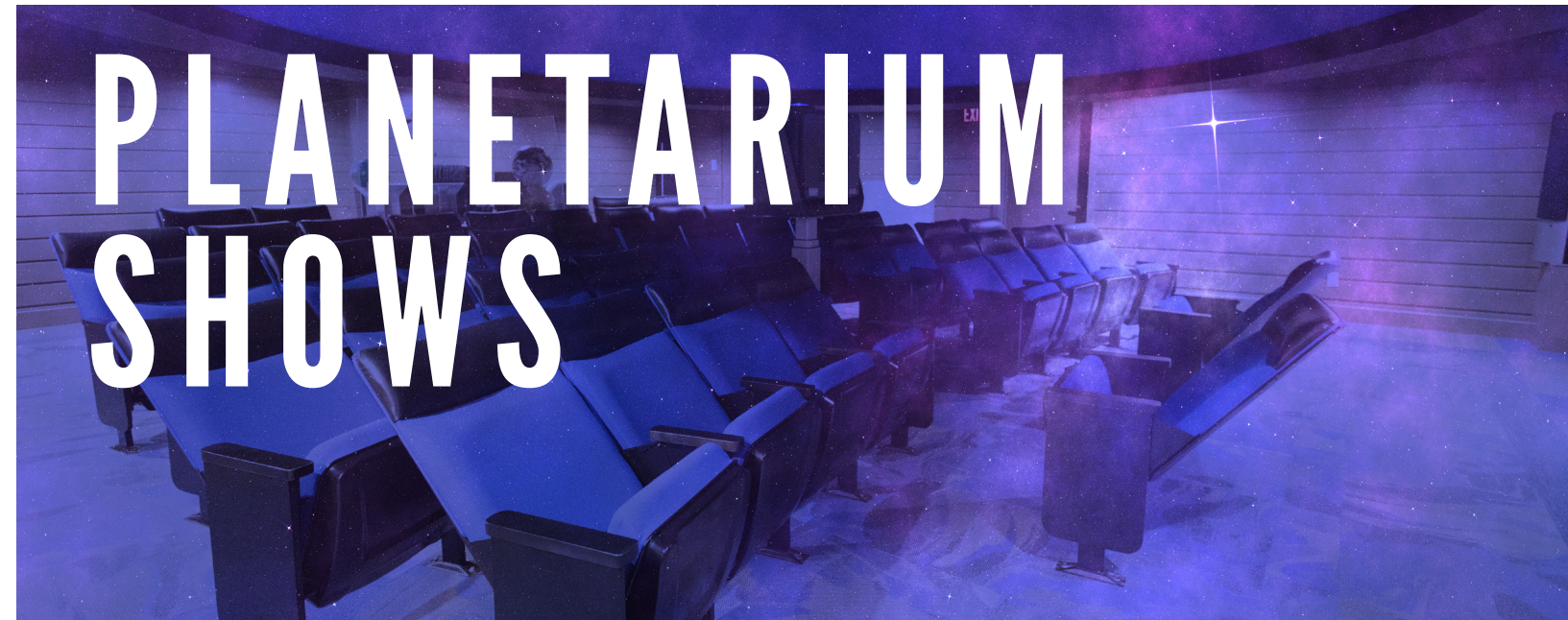
Reading can take you anywhere!

Join your community and read across America this month. Log your reading to earn digital badges throughout the challenge.

After joining the challenge, you will have the month of March to log 300 minutes

This challenge is for all ages.

Join now at myscpl.beanstack.com.



105 Lakewood Drive in Luling • 985-785-8471

Journey into space and learn about our place in the universe at the St. Charles Parish Library Planetarium, located at the West Regional Library in Luling.

From mysteries of the moon to the stories that shape our sun, the planetarium will show you sights that are out of this world!

Seating is on a first come, first serve basis.

Due to the unusual lighting condition, no one is allowed to enter once the show has started.

Evening Showings

TUESDAYS & THURSDAYS
6:30PM
For adults, teens, and older children.

Forward! To the Moon

Explore humanity's return to the Moon with NASA's Artemis mission and learn about our nearest neighbor in space and our plans to create a permanent base on it!

Children's Matinee

SATURDAYS
10:00AM
For all ages.

Earth, Moon, & Sun

Join Coyote, a confused but witty character adopted from Native American oral traditions, and explore common misconceptions about the Earth, Moon, and Sun!

Saturday Matinee

SATURDAYS
2:00PM
For adults, teens, and older children.

CAPCOM GO!

Immerse yourself in the Apollo 11 story and learn about our moon and the great space race! See the successes and failures through actual NASA footage.



ADULTS & ALL AGES

Adult events are for ages 18 and up unless otherwise noted.

R Registration opens 14 days prior to events. To register, go to our events page on our website myscpl.org or call your local branch.

EAST REGIONAL

Yoga

TUESDAYS • 6PM *Except March 4*
Join Sara Lyon for a gentle yoga class introducing the concepts of yoga postures, breathwork, and mindful meditation.
Supported by the United Way of St. Charles and Creative Family Solutions.

German Coast Farmers' Market

SATURDAYS • 8AM - NOON
Visit the German Coast Farmers' Market at the East Regional Library parking lot. Bring your family and friends for fresh produce, food vendors, and shopping from local artisans.

For all ages.

Art Lab with Becca Hillburn **R**

WEDNESDAY, MARCH 5 • 6PM
Advance your art skills with professional artist Becca Hillburn. This program is designed to further develop your knowledge and love of art.

For teens and adults.

Movie Thursday: *Bambi*

THURSDAY, MARCH 6 • 10AM
Join us for a showing of *Bambi* (G) while we create spring-themed keychains.

Doors open at 10:00am and the movie begins at 10:15am.

Cookbook Club

MONDAY, MARCH 17 • 6PM
Choose a recipe from the selected theme and prepare it for the meeting. Everyone will share information about their dish.

This month's theme is Joanna Gaines Recipes.

Easter Chick Painting **R**

MONDAY, MARCH 24 • 6PM
Paint your own Easter chick wall hanging using wooden Easter egg cutouts.

Back to School Concert

TUESDAY, MARCH 25 • 3:30PM
Come listen to a duet of strings performed by the Louisiana Philharmonic Orchestra!

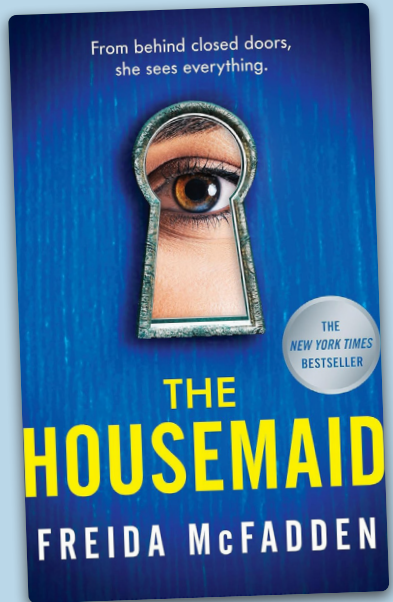
For all ages.

ST. ROSE BRANCH

Midday Mystery Club

WEDNESDAY, MARCH 12 • 11AM
Are you a fan of mysteries of all kind? Then join the Midday Mystery Club! Each month will be dedicated to the discussion of a topical mystery.

This month's topic is The Curse of Christopher Case.



TBR (The Buzzy Reads) Book Club
Each month, we will discuss a popular book and enjoy a themed craft to bring the story to life. Whether you have read the book or are just curious about the hype, all readers are welcome!
This month's book is *The Housemaid* by Freida McFadden.

ST. ROSE BRANCH
MONDAY, MARCH 17 • 6PM



Coffee and Crafts

SATURDAY, MARCH 29 • 11AM
Come relax, sip, and create on the last Saturday of the month.

We'll have coffee (and tea) while we create simple, fun craft projects.

NORCO BRANCH

Senior Social

TUESDAY, MARCH 18 • 11AM & 3PM
Games, snacks, and fun for senior citizens.

WEST REGIONAL

Silver Sneakers Classic

MONDAYS • 10AM *Except March 3*
Silver Sneakers Classic focuses on strengthening muscles and increasing range of motion for daily life activities.

Non-members and beginners are welcome.

Silver Sneakers Chair Yoga

MONDAYS • 11AM *Except March 3*
Silver Sneakers Chair Yoga will move your whole body through a series of seated and standing yoga poses designed to increase balance, flexibility, and range of movement.

Non-members and beginners are welcome.



Flying Needles

TUESDAYS • 5PM *Except March 4*
This knitting and crocheting group is open to anyone who wants to learn a new craft or share their talents.

Adventure League

WEDNESDAY, MARCH 5 & 19 • 6PM
Gather for an adventure unlike any other in Dungeons & Dragons! Immerse yourself in a world of fantasy where teamwork, creativity, and strategy are your greatest assets in this tabletop roleplaying game.

Beginners and advanced players are welcome!

Herb Gardening and Cooking Workshop with LSU AgCenter

MONDAY, MARCH 10 • 6PM
Are you interested in learning how to grow your own herbs and prepare delicious, healthy dishes?
Learn how to plant, care for, and harvest your herb garden from Alyssa Tarrant, LSU AgCenter Horticulturist.

Nutritionist Rinalda Roquin will lead a cooking demonstration and explain the nutritional benefits of herbs and how to incorporate them into your diet

Creating Art Together

TUESDAY, MARCH 18 • 9AM
In collaboration with the St. Charles Art Guild, this drop-in program invites artists of all levels to bring their works in progress to the library, share ideas, seek feedback, and create art in a welcoming and supportive environment.

Back to School Concert

TUESDAY, MARCH 25 • 6PM
Come listen to a duet of strings performed by the Louisiana Philharmonic Orchestra!

For all ages.



Good Things Book Club

WEDNESDAY, MARCH 26 • 6PM
Our book club offers a welcoming space to share thoughts, exchange ideas, and expand your reading horizons!

This month's theme is Poetry & Prose. Bring any book of poetry to discuss.

PARADIS BRANCH

Diabetes Education & Awareness **R**

SATURDAY, MARCH 8 • 11AM
Join us for an informative and interactive workshop designed specifically for individuals with diabetes or their caregivers.

Rinalda Rocquin, a Nutrition and Community Health Agent with the LSU AgCenter, will discuss the crucial role that vitamins, minerals, and fiber play in managing diabetes and maintaining overall health. She will also share practical tips for incorporating a variety of nutrient-rich foods into your diet.

Participants will have the opportunity to sample a delicious and healthy dish and leave with new recipes and meal-planning ideas to try at home.

Cookbook Club

FRIDAY, MARCH 14 • 11AM
Choose a recipe from the selected theme and prepare it for the meeting. Everyone will share information about their dish.

This month's theme is Tasty Tales of Ireland.

HAHNVILLE BRANCH

Perler Bead Coasters **R**

MONDAY, MARCH 17 • 2PM
Design and create your own colorful, personalized coasters using Perler beads. No experience necessary—just bring your imagination!

MARCH 2025

All activities are subject to change.

Check our website myscpl.org or visit us on our social media accounts @stcharleslib for more information or schedule changes.



Sunday	Monday	Tuesday	Wednesday	Thursday	Friday	Saturday
						1 • German Coast Farmers' Market 8am - Noon (Aa) • Children's Matinee 10am (C) PLANETARIUM • Saturday Matinee 2pm (Aa) PLANETARIUM • Teen VRVerse 2:00pm (T) R
2	3 Library Closed for Mardi Gras Holidays	4 Library Closed for Mardi Gras Holidays	5 • Storytime 10:30am (C) • Family Movie Night: <i>Inside Out 2</i> 2pm (F) R • Nerd Night: D&D Frozen Sick 5:30pm (T) • Adventure League 6pm (A) • Art Lab with Becca Hillburn 6pm (A, T) R	6 • Movie Thursday: <i>Bambi</i> 10am (A) • Storytime 10:30am (C) • Storytime 10:30am (C) • Homeschool Teen Connect: Art Skills 1:30pm (T) R • TACOS - Teen Advisory Council of Students 4pm (Ages 10+) • LEGO Club 6pm (C) • Family Movie & Craft - <i>The Wild Robot</i> 5:30pm (F) • Evening Showing 6:30pm (Aa) PLANETARIUM	7	8 • German Coast Farmers' Market 8am - Noon (Aa) • Children's Matinee 10am (C) PLANETARIUM • Diabetes Education & Awareness 11am (A) R • Saturday Matinee 2pm (Aa) PLANETARIUM
9	10 • Silver Sneakers Classic 10am (A) • Silver Sneakers Chair Yoga 11am (A) • Homeschool Connect: LEGO Challenge 3pm (F) R • Spring into Stained Glass 5:30pm (Tw) R • Herb Gardening and Cooking Workshop with LSU AgCenter 6pm (A)	11 • Storytime 10:30am (C) • Storytime 10:30am (C) • Homeschool Connect: Zoetropes 2pm (F) R • Flying Needles 5pm (A) • Toadstool Fairy Home 5:30pm (T) R • Yoga 6pm (A) • Evening Showing 6:30pm (Aa) PLANETARIUM	12 • Storytime 10:30am (C) • Midday Mystery Club 11am (A) • Nerd Night: D&D Frozen Sick 5:30pm (T)	13 • Storytime 10:30am (C) • Storytime 10:30am (C) • Homeschool Teen Connect: Art Skills 1:30pm (T) R • Teen Time: Nintendo Switch 4pm (T) • DIY Recycled Wind Chimes 6pm (C) R • Evening Showing 6:30pm (Aa) PLANETARIUM	14 • Learn With Us Bus 10am (C) • Storytime 10:30am (C) • Cookbook Club 11am (A)	15 • German Coast Farmers' Market 8am - Noon (Aa) • Children's Matinee 10am (C) PLANETARIUM • Saturday Matinee 2pm (Aa) PLANETARIUM
16	17 • Silver Sneakers Classic 10am (A) • Silver Sneakers Chair Yoga 11am (A) • Perler Bead Coasters 2pm (A) R • Crafting for Conservation: Birdhouses and Feeders 6pm (C) R • TBR (The Buzzy Reads) Book Club 6pm (A) • Cookbook Club 6pm (A)	18 • Creating Art Together 9am (A) • Storytime 10:30am (C) • Storytime 10:30am (C) • Senior Social 11am (A) • Homeschool Connect: Battle Bots 2pm (F) R • Senior Social 3pm (A) • Flying Needles 5pm (A) • Teen Hangout! 5:30pm (T) • Yoga 6pm (A) • Evening Showing 6:30pm (Aa) PLANETARIUM	19 • Storytime 10:30am (C) • Nerd Night: D&D Frozen Sick 5:30pm (T) • Adventure League 6pm (A)	20 • Storytime 10:30am (C) • Storytime 10:30am (C) • Homeschool Connect: STEM Builds 1:30pm (F) R • Teen Time: Anime Afternoon 4pm (T) • Thursday Thrills: Cloud Slime 4:30pm (Ages 10+) • Kids VRVerse 6pm (Tw) • Ex-Straw-Vaganza 6pm (C) • Evening Showing 6:30pm (Aa) PLANETARIUM	21 • Storytime 10:30am (C)	22 • German Coast Farmers' Market 8am - Noon (Aa) • Children's Matinee 10am (C) PLANETARIUM • Musical Storytime 10:30am (F) • Saturday Matinee 2pm (Aa) PLANETARIUM
23	24 • Silver Sneakers Classic 10am (A) • Silver Sneakers Chair Yoga 11am (A) • Blend and Craft! 5:30pm (T) • Teddy Bear Bingo 6pm (F) R • Easter Chick Painting 6pm (A) R	25 • Learn With Us Bus 10am (C) • Storytime 10:30am (C) • Storytime 10:30am (C) • Bach to School Concert 3:30pm (Aa) • Flying Needles 5pm (A) • Garden Thyme: Spring Garden Kit 5:30pm (T) R • Bach to School Concert 6pm (Aa) • Yoga 6pm (A) • Evening Showing 6:30pm (Aa) PLANETARIUM	26 • Storytime 10:30am (C) • Nerd Night: D&D Frozen Sick 5:30pm (T) • Good Things Book Club 6pm (A)	27 • Storytime 10:30am (C) • Storytime 10:30am (C) • Homeschool Teen Connect: Art Skills 1:30pm (F) R • DIY Spa Kits 4pm (T) R • LEGO Club 6pm (C) • Pipe Cleaner Flowers 6pm (C) R • Evening Showing 6:30pm (Aa) PLANETARIUM	28 • Storytime 10:30am (C)	29 • German Coast Farmers' Market 8am - Noon (Aa) • Crafty Market Morning 9am - 11am (F) • Children's Matinee 10am (C) PLANETARIUM • Coffee and Crafts 11am (A) • Saturday Matinee 2pm (Aa) PLANETARIUM
30	31 • Silver Sneakers Classic 10am (A) • Silver Sneakers Chair Yoga 11am (A)					

LOCATION

- East Regional in Destrehan
- West Regional in Luling
- Hahnville
- Norco
- Paradis
- St. Rose

AGE GROUPS

- A..... Adults
- T..... Teens
- Tw..... Tweens
- C..... Children
- F..... Family
- Aa..... All Ages

All events are free and open to the public.

Children under 10 must be accompanied by a parent or caregiver.



Registration is required for some events.

Online registration opens 14 days before the event.



EAST REGIONAL

Art Lab with Becca Hillburn **R**

WEDNESDAY, MARCH 5 • 6PM
Develop your art skills and increase your love of art in the Art Lab hosted by professional artist Becca Hillburn.

For teens and adults.

Toadstool Fairy Home **R**

TUESDAY, MARCH 11 • 5:30PM
Let your creativity bloom as you transform clay pots into enchanting toadstool fairy homes! Join us for a whimsical crafting session with paint, imagination, and a touch of magic!

For ages 10+.

Teen Hangout!

TUESDAY, MARCH 18 • 5:30PM
Come hang out in the Teen Room!

Compete with your friends on the Nintendo Switch, play board games, and enjoy some snacks!

ST. ROSE BRANCH

Teen Time: Nintendo Switch

THURSDAY, MARCH 13 • 4PM
Come hang out, compete with your friends, or play on your own with our Nintendo Switch.



Teen Time: Anime Afternoon

THURSDAY, MARCH 20 • 4PM
Calling all anime fans! Stop in and grab a snack as we watch an episode or two from our favorite afternoon anime.

This month's episode is from the show *My Hero Academia*.

DIY Spa Kits **R**

THURSDAY, MARCH 27 • 4PM
Midterms left you feeling stressed?

Come rejuvenate as you make a DIY Spa kit! You'll get to create your own lip balm, body scrub, and clay face mask to soothe your skin and leave you feeling relaxed and restored.

Garden Thyme: Spring Garden Kit **R**

Ready to get your hands dirty?

Join us for a fun, hands-on gardening program just for teens! You'll learn the basics of planting and caring for spring seeds, and you'll even get to take some home to start your own mini garden.

Whether you're a budding plant parent or a total newbie, come grow with us!

EAST REGIONAL LIBRARY

TUESDAY, MARCH 25 • 5:30PM

NORCO BRANCH

Blend and Craft!

MONDAY, MARCH 24 • 5:30PM
Relax and unwind with tea blending!
Make your own blend of tea catered to your taste, and decorate a tin to hold your leaves.



WEST REGIONAL

Teen VRVerse **R**

SATURDAY, MARCH 1 • 2PM
Enter the VRVerse with our SteamVR system! Each player can choose a game from our collection of awesome VR titles!
Each registered participant will have a 10 minute reserved play session. Please arrive at least 15 minutes before the program starts to pick a time slot.



Nerd Night: D&D Frozen Sick

WEDNESDAYS • 5:30PM
Something is killing people in Palebank Village, and if the characters don't stop it, they might be next. "Frozen Sick" is an adventure that takes characters from 1st to 3rd level and introduces them to the continent's Biting North region—the bleak arctic realms of the Greying Wildlands and Eiselcross.

Please bring a level 1 character, or we will have premade characters to choose from.



PARADIS BRANCH

TACOS: Teen Advisory Council of Students

THURSDAY, MARCH 6 • 4PM
Join our Teen Advisory Council of Students, where you can pick activities and brainstorm ideas for future programs while enjoying snacks and drinks!
For ages 10+.

Homeschool Teen Connect: Art Skills **R**

This is a six week art course with local graphic book artist Becca Hillburn.

THURSDAY, MARCH 6 • 1:30PM

Learn how to draw objects by adding shape, contour, surface design, and texture.

THURSDAY, MARCH 13 • 1:30PM

Learn how light and shadow create depth and dimension to an object.

THURSDAY, MARCH 27 • 1:30PM

Learn how to add more complex textures to a drawing such as metal, fur, and water.

Thursday Thrills: Cloud Slime

THURSDAY, MARCH 20 • 4:30PM

Cloud Slime drizzles and fluffs!

Make your own snow flurry to take home.

For tweens and teens.

Your favorite kids' comics and manga are on **hoopla**

Start exploring today!

hoopladigital.com

App Store | Google Play | Roku | Amazon | Chromecast | androidauto | Apple CarPlay



Children under 10 must be accompanied by an adult.

R Registration opens 14 days prior to events. To register, go to our events page on our website myscpl.org or call your local branch.



STORYTIMES

Storytime introduces the love of books and reading to young children. We use stories, music, rhymes, and fingerplays to encourage children to discover and explore the world.

Themes change weekly, and playtime follows each storytime.

For children 0-5.

TUESDAYS

East Regional Library • 10:30AM
Paradis Branch • 10:30AM

WEDNESDAYS

West Regional Library • 10:30AM

THURSDAYS

Norco Branch • 10:30AM
Hahnville Branch • 10:30AM

FRIDAYS

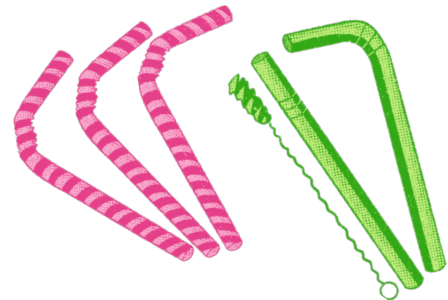
St. Rose Branch • 10:30AM
Except March 7

EAST REGIONAL

Family Movie & Craft: *The Wild Robot*

THURSDAY, MARCH 6 • 5:30PM
Get Ready for a Wild adventure!

Join us to watch *The Wild Robot* (PG) and build your own Wild Robot to take home.



Ex-Straw-Vaganza

THURSDAY, MARCH 20 • 6PM
Slurp up a good time with some straw-related fun! Play games, design jewelry, blow bubbles, and more.

LEGO Club

THURSDAY, MARCH 27 • 6PM
Calling all LEGO builders!

Build your own LEGO creations and meet new friends. Complete a different challenge each month.

Crafty Market Morning

SATURDAY, MARCH 29 • 9AM - 11AM
Take a break from the farmers' market and check out the craft offerings.

For families.

Back to School Concert

TUESDAY, MARCH 25 • 3:30PM
Come listen to a duet of strings performed by the Louisiana Philharmonic Orchestra!

For all ages.

ST. ROSE BRANCH

Teddy Bear BINGO **R**

MONDAY, MARCH 24 • 6PM
Bring your favorite stuffed animal for good luck at this BINGO night of family fun!

For families.

Learn With Us Bus

TUESDAY, MARCH 25 • 10AM
The Learn With Us Bus provides books, toys, and games for children and assists parents in accessing community resources.

Sponsored by United Way and SCPPS.

NORCO BRANCH

Spring into Stained Glass **R**

MONDAY, MARCH 10 • 5:30PM
Create your own vibrant, stained-glass art by decorating a picture frame with fun stencils, paint, sharpies, and glue!

For tweens.



Musical Storytime

Enjoy an interactive story and musical adventure featuring a musician from the Louisiana Philharmonic Orchestra. The musician will play a demo on their instrument and explain a little bit about their instrument and their background. We will finish with a story with musical accompaniment.

For families.

EAST REGIONAL LIBRARY

SATURDAY, MARCH 22 • 10:30AM

WEST REGIONAL

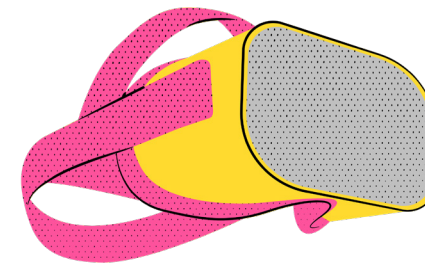
LEGO Club

THURSDAY, MARCH 6 • 6PM
Calling all LEGO builders!

Build your own LEGO creations and meet new friends. Complete a different challenge each month.

DIY Recycled Wind Chimes **R**

THURSDAY, MARCH 13 • 6PM
Children will create unique wind chimes from colorful beads, bells, buttons, and upcycled materials. They can select their favorite colors and charms to assemble and tie the chimes together.



Kids VRVerse

THURSDAY, MARCH 20 • 6PM
Enter the VRverse with our SteamVR system!

Please arrive early to secure your time slot!

For tweens.

Pipe Cleaner Flowers **R**

THURSDAY, MARCH 27 • 6PM
Get ready for a blooming good time! With just a few twists and turns, you'll transform pipe cleaners into beautiful blossoms to brighten up your space or share as a handmade gift.

Back to School Concert

TUESDAY, MARCH 25 • 6PM
Come listen to a duet of strings performed by the Louisiana Philharmonic Orchestra!

For all ages.

PARADIS BRANCH

TACOS: Teen Advisory Council of Students

THURSDAY, MARCH 6 • 4PM
Join our **T**een **A**dvisory **C**ouncil of **S**tudents, where you can pick activities and brainstorm ideas for future programs while enjoying snacks and drinks!

For ages 10+.

Learn With Us Bus

FRIDAY, MARCH 14 • 10AM
The Learn With Us Bus provides books, toys, and games for children and assists parents in accessing community resources.

Crafting for Conservation: Birdhouses and Feeders **R**

MONDAY, MARCH 17 • 6PM
Create birdhouses and bird feeders from toilet paper rolls and craft supplies!

Thursday Thrills: Cloud Slime

THURSDAY, MARCH 20 • 4:30PM
Cloud Slime drizzles and fluffs! Make your own snow flurry to take home.

For tweens and teens.

HAHNVILLE BRANCH

Family Movie Night: *Inside Out 2* **R**

WEDNESDAY, MARCH 5 • 2PM
Dive into Riley's colorful world of emotions with us while we watch *Inside Out 2* (PG)! Enjoy some tasty snacks and create your very own emotion!

For families.

HOMESCHOOL CONNECT

LEGO Challenge **R**

Join us for the LEGO Challenge at the library! This fun, hands-on program encourages creativity and problem-solving as participants tackle the challenges using LEGO bricks.

HAHNVILLE BRANCH

MONDAY, MARCH 10 • 3PM

Zoetropes **R**

Explore the fascinating world of animation by creating your own moving images with this classic spinning device.

NORCO BRANCH

TUESDAY, MARCH 11 • 2PM

Battle Bots **R**

Enhance your Edison Robot with LEGO to create a fearsome Battle Bot. Whose creation will come out on top?

ST. ROSE BRANCH

TUESDAY, MARCH 18 • 2PM

STEM Builds **R**

Get ready for a fun and interactive STEM Building Challenge at the library! Put your creativity and skills to the test as you work with various materials to design and build structures.

PARADIS BRANCH

THURSDAY, MARCH 20 • 1:30PM

LOCATIONS & HOURS

QUESTIONS?

Call your local branch, message us on social media @stcharleslib, or visit us!



CURBSIDE

Curbside pickup service is available from opening until 30 minutes before closing.



Download the St. Charles Parish Library app by scanning the QR code.



EAST REGIONAL LIBRARY

985-764-2366

**160 W. Campus Dr.
Destrehan, LA. 70047**

Monday - Thursday: 9am - 8pm

Friday & Saturday: 9am - 5pm

WEST REGIONAL LIBRARY

985-785-8472

**105 Lakewood Dr.
Luling, LA. 70070**

Monday - Thursday: 9am - 8pm

Friday & Saturday: 9am - 5pm

ST. ROSE BRANCH

504-465-0646

**90 East Club Dr.
St. Rose, LA. 70087**

Monday: 10am - 8pm

Tuesday - Thursday: 10am - 6pm

Friday: 9am - 5pm

Saturday: 10am - 2pm

PARADIS BRANCH

985-758-1868

**307 Audubon St.
Paradis, LA. 70080**

Monday: 10am - 8pm

Tuesday - Thursday: 10am - 6pm

Friday: 9am - 5pm

Saturday: 10am - 2pm

NORCO BRANCH

985-764-6581

**590 Apple St.
Norco, LA. 70079**

Monday: 10am - 8pm

Tuesday - Thursday: 10am - 6pm

Friday: 9am - 5pm

Saturday: 10am - 2pm

HAHNVILLE BRANCH

985-783-2341

**14996 River Rd.
Hahnville, LA. 70057**

Monday - Friday: 9am - 5pm

Always open at www.myscpl.org